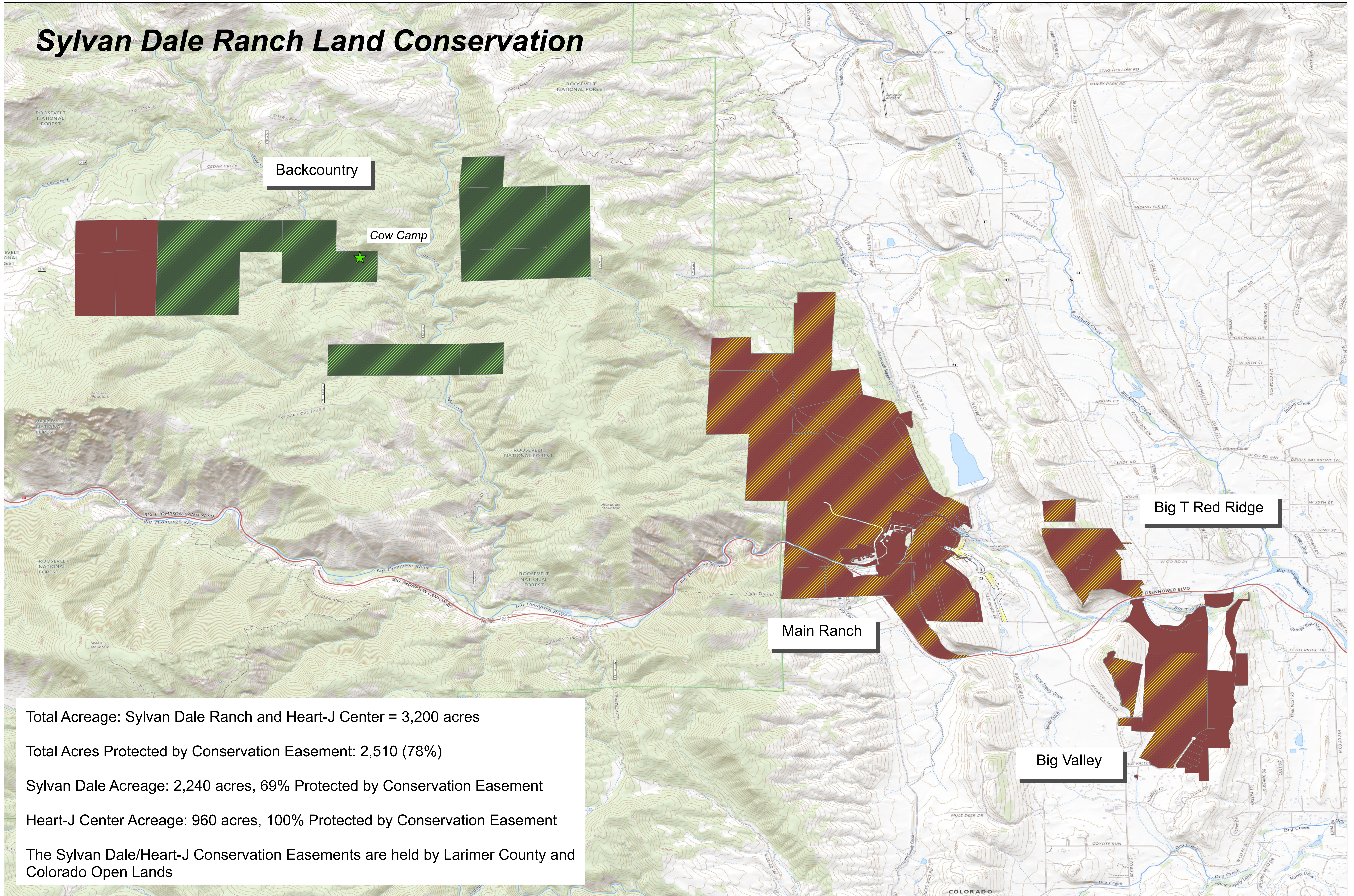


Sylvan Dale Ranch Land Conservation

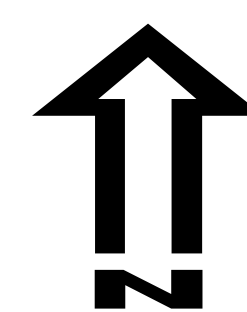


Total Acreage: Sylvan Dale Ranch and Heart-J Center = 3,200 acres
 Total Acres Protected by Conservation Easement: 2,510 (78%)
 Sylvan Dale Acreage: 2,240 acres, 69% Protected by Conservation Easement
 Heart-J Center Acreage: 960 acres, 100% Protected by Conservation Easement
 The Sylvan Dale/Heart-J Conservation Easements are held by Larimer County and Colorado Open Lands

 Heart-J Center for Experiential Learning at Sylvan Dale Ranch, Loveland, Colorado

Map created 8 March 2022

Data sources: Larimer County GIS Dept Land Ownership, USGS National Topographic Map



0 0.5 1 2 3 Miles

Legend

- Sylvan Dale - without conservation easement
- Sylvan Dale - protected by conservation easement
- Heart-J Center - protected by conservation easement